

3D Tour Kit

Download Asteroom Mobile App And Create an Account



Android



iOS

Activate Brokerage Plan Account

Enter brokerage code if your brokerage is an affiliate,

1. Click “Menu”
2. Click “Plan”
3. Enter brokerage code

You may skip this step if your brokerage is not an Asteroom affiliate.

*Brokerage code is used to activate your Brokerage Plan provided to you by your brokerage. Ask your broker for the code, or go to www.asteroom.com/pricing and enter your brokerage email to obtain the brokerage code. And go to Profile > Plan to enter the code.

Watch Asteroom Tutorial Video

We know no one likes to read instructions. So watch this video and learn everything you need to know about Asteroom in a few minutes.



Open your camera app on your mobile phone, and scan (point at) the QR Code to view video. Or type link into browser to view <https://bit.ly/30Stq9s>

Download Onboarding Manual

Scan the QR code to download onboarding manual.

Asteroom 3D Tour Kit Parts Description



Rotator



Phone case



Fisheye lens

USB Charger



Tripod

Getting Started with 3D Tour Kit

1. Charge the rotator

The red light indicates charging and will turn off when fully charged.

2. Prepare the rotator

Please remember to turn the phone holder (the top piece of the rotator) until completely tight by screwing it clockwise.



3. Extend Tripod

Fully extend all legs and clip into a locking position. Ensure the tripod is on a level surface extended to about 4 feet in height from the ground.

4. Attach rotator to the tripod

Align the base of the rotator with the tripod bolt. Screw clockwise until it is secure on the tripod



Set up Your Phone

Take off any personal phone case and attach the Asteroom phone case to your phone. Unscrew the fisheye lens from the clip and then screw it into the phone case.



Asteroom phone case will always give the best result because it's designed to ensure a perfect alignment between the fisheye lens and the phone.



If you do not have a compatible Asteroom phone case, clip fisheye lens to phone lens. It is recommended to keep it when the phone camera sticks out from the back of the phone.

Turn on the “Camera” in the app to see if there is any area blurred or darkly colored.

Do remember to remove the cover of fisheye lens.



Place Phone on the Rotator

For phones with the camera on the left or right side, align the lens with the nearest clip jaw so the camera is as center as possible while the phone is kept balanced.



For phones with the camera in the center, align the camera with the nob in the middle.



Connect the Rotator with the App

1. Turn on Bluetooth of your phone, turn on the rotator with “ON/OFF” switch.
2. Click “Camera” in the app.
3. The rotator will automatically pair with the app via Bluetooth.
4. After the connection is established, [Connected] will be shown on the screen, and you are ready to start taking photos.

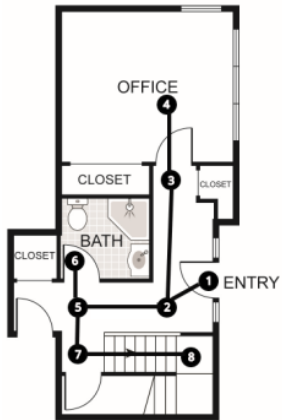


Line of Sight

Before you start taking your first tour - **please ensure all doors are opened** so that Asteroom's AI can learn the layout of the home. Open the blinds so that your listing will get the best lighting. If your phone supports HDR, use the HDR feature to get the best photo quality.

Start from the entrance - take a panoramic photo. Then slowly move into other parts of the home while keeping a **"direct line of sight" with one or more spots that you had shot.** (See image below) The order of the shots do not matter as long as all the rooms and hallways are covered.

You do not need to shoot staircases, but do remember to shoot stairs landing. Asteroom will connect the floors automatically for you.



System Requirements

iOS 11 or newer

Android 6 or newer

This product and mobile app use Bluetooth 4.0 for data transmission. Ensure your phone specifications meet product requirements.

Limited Warranty

3D Tour Kit is guaranteed with one-year warranty.

Contact support@asteroom.com for assistance with all claims

Intended Usage

Asteroom was designed to be used to create 3D Tours. Any use outside of this will result in a voided.

In-app Help

View our help center by clicking “Help Center” in the” Menu”.

View tutorial videos by clicking “Tutorials” in the Menu.

Support

Help Center: <https://asteroomhelp.zendesk.com/>

Support Email: support@asteroom.com

Live support: Call +1 (831) 298-6517